

Kenwood Elementary School

Kenwood Elementary School District

SARC
2009-10



2009-10 School Accountability Report Card • Published During the 2010-11 School Year

GRADES K-6

230 Randolph Avenue Kenwood, CA 95452

Phone: (707) 833-2500 Fax: (707) 833-2181

Website: www.kenwoodschool.org

Robert Bales

Superintendent/Principal

Principal's Message

The Kenwood School is the only school in the Kenwood School District, which serves 170 students in preschool through sixth grade. It is located in Kenwood, California, in Sonoma County, about 60 miles north of San Francisco, in a beautiful agricultural area, the Valley of the Moon. The community is proud of and involved in the school. A very strong parent support group (The Kenwood School Association) and a foundation (The Kenwood School Foundation) both help ensure strong, supportive community involvement and quality education for the children.

School Mission Statement

Kenwood School provides academic excellence in a child-centered environment, which allows students to realize their full potential both academically and socially. This is accomplished through the guidance of an experienced and dedicated teaching staff with instructional assistants in every classroom to provide an adult-to-student ratio that is among the lowest in Sonoma County. Kenwood students receive a well-rounded educational experience through state-of-the-art academic curriculum and enrichment programs supported by active parent and community involvement. In this setting, all children are acknowledged and valued by the entire staff, creating expectations for high student achievement and behavior as well as a sense of personal responsibility to the school and the community.

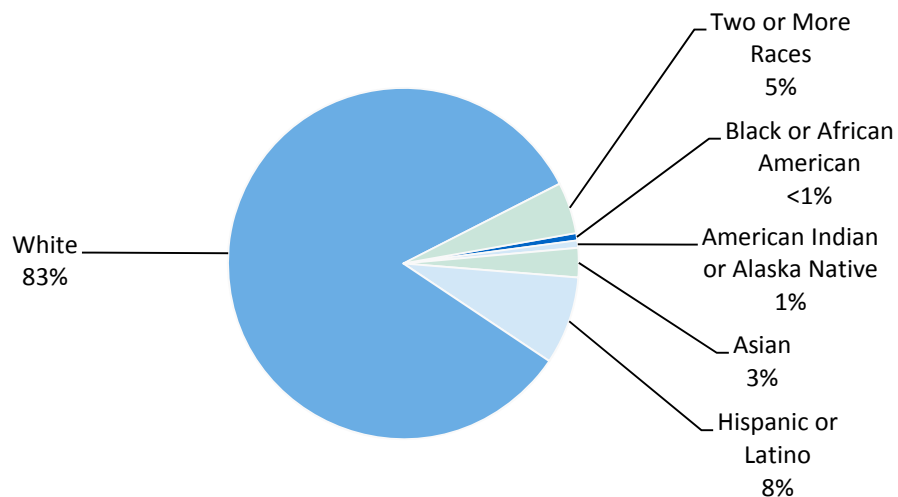
School Vision Statement

Kenwood School is a small community elementary school committed to the highest standards of academic excellence and social values, where students are provided a foundation for lives of purpose, service, and lifelong learning.



Enrollment and Demographics

The total enrollment at the school was 148 students for the 2009-10 school year.



“Kenwood School is a place where teachers, students, parents and community members work together to provide a foundation of academic success for all of our students.”

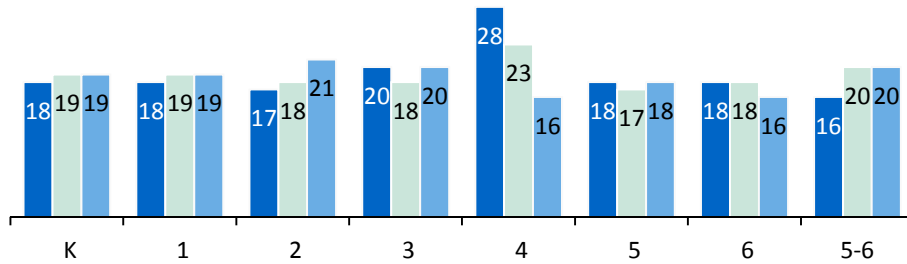


“Home of the Cougars”

Class Size

07-08 08-09 09-10

The bar graph displays the three-year data for average class size.



Class Size Distribution — Number of Classrooms By Size

Grade	07-08			08-09			09-10		
	1-20	21-32	33+	1-20	21-32	33+	1-20	21-32	33+
K	1			1			1		
1	1			1			1		
2	1			1				1	
3	1			1			1		
4		1			1		1		
5	1			1			1		
6	1			1			1		
5-6	1			1			1		

Textbooks and Instructional Materials

All textbooks are adopted from the most recent State-approved list by the Superintendent/Principal with input from the teachers, support staff, and community. The Board of Trustees ultimately approves all curriculum decisions, which are based on content consistent with curriculum frameworks adopted by the State Board of Education. All students, including English Learners, have access to their own textbooks and instructional materials.

Textbooks and Instructional Materials List

Subject	Textbook	Adopted
English-Language Arts	Houghton Mifflin	2005
Mathematics	McGraw-Hill	2008
Science	Harcourt	2008
History-Social Science	Houghton Mifflin	2008

Note: This data was most recently collected and verified in August 2010.

Parental Involvement

There are many ways for parents to become involved in their child's education at Kenwood Elementary School. Below is a list of programs and their contact information.

- Board of Trustees — Bob Bales (707) 833-2500
- Kenwood Children's Center Parent Advisory Committee — Bob Bales, Director (707) 833-2500
- Kenwood Education Foundation, — Jennifer Anderson, President (707) 833-2500
- Kenwood School Association — Diane Kopes-Kerr, Chair (707) 833-2500
- Kenwood School Site Council — Bob Bales, Principal (707) 833-2500



Availability of Textbooks and Instructional Materials

The following lists the percentage of pupils who lack their own assigned textbooks and instructional materials:

Kenwood ES	
Subject	Percent Lacking
Reading/Language Arts	0%
Mathematics	0%
Science	0%
History-Social Science	0%
Visual and Performing Arts	✧
Foreign Language	✧
Health	✧
✧ Not applicable.	

School Facility Items Inspected

The tables show the results of the school’s most recent inspection using the Facility Inspection Tool (FIT) or equivalent school form. The following is a list of items inspected.

- **Systems:** Gas Systems and Pipes, Mechanical Systems (heating, ventilation, and air conditioning), Sewer
- **Restrooms/Fountains:** Restrooms, Sinks/Drinking Fountains (interior and exterior)
- **Interior:** Interior Surfaces (floors, ceilings, walls, and window casings)
- **Safety:** Fire Safety Equipment, Emergency Systems, Hazardous Materials (interior and exterior)
- **Cleanliness:** Pest/Vermin Control, Overall Cleanliness (school grounds, buildings, rooms, and common areas)
- **Structural:** Structural Condition, Roofs
- **Electrical:** Electrical Systems (interior and exterior)
- **External:** Windows/Doors/Gates/ Fences, Playgrounds/School Grounds

School Facility Good Repair Status

This inspection determines the school facility's good repair status using ratings of good condition, fair condition, or poor condition. The overall summary of facility conditions uses ratings of exemplary, good, fair, or poor condition.

School Facility Good Repair Status			
Items Inspected	Repair Status	Items Inspected	Repair Status
Systems	Good	Restrooms/Fountains	Good
Interior	Good	Safety	Good
Cleanliness	Good	Structural	Good
Electrical	Good	External	Good
Overall Summary of Facility Conditions			Good
Date of the Most Recent School Site Inspection			12/21/2010
Date of the Most Recent Completion of the Inspection Form			12/21/2010

Note: At the time of this school facility inspection, no deficiencies were found.

School Facilities

Kenwood Elementary School consists of the original building constructed in 1960, the Multipurpose Building constructed in 1987, and four portable classrooms. The original main building houses Kindergarten through Second grade, the Resource Specialist, the Computer Lab, the Library and the School/District Office. A modernization project for this building was completed in August 2008. The Multipurpose Building includes the Multipurpose Room, the kitchen, Third and Fourth grade classrooms and the teacher’s staff room. The four portable buildings house Fifth, Sixth and the 5/6 combination classes, as well as the Creativity Room where art and music classes are held. In addition, Kenwood School has a Preschool and Day Care program on site in two more portable classrooms.

Kenwood School utilizes a Safety Committee consisting of the Superintendent/Principal, a parent member of the School Site Council, and the Custodian. The School Site Council reviews the Safety Committee report on a monthly basis. Kenwood School prides itself on the safety and cleanliness of the entire campus.

The district employs two custodians who clean the facility on a daily basis. All of the classrooms meet the state requirement for space. The restrooms, electrical system, and the plumbing are checked on a daily basis.

Modernization and upgrades were recently completed in the summer of 2008 for the main building, originally constructed in 1961. The project was funded with a 60/40 match by the State as well as mitigation fee and District of Choice revenues.

Suspensions and Expulsions

This table shows the rate of suspensions and expulsions (the total number of incidents divided by the school’s total enrollment) for the most recent three-year period.

Suspension Rate		
Kenwood ES		
07-08	08-09	09-10
0.020	0.066	0.041
Kenwood ESD		
07-08	08-09	09-10
0.020	0.066	0.041
Expulsion Rate		
Kenwood ES		
07-08	08-09	09-10
0.000	0.000	0.007
Kenwood ESD		
07-08	08-09	09-10
0.000	0.000	0.007

“The community is proud of and involved in the school.”



STAR Results for All Students: Three-Year Comparison

The Standardized Testing and Reporting (STAR) results are reported as performance levels in order to compare student achievement to state standards. The five performance levels are: **Advanced** (*exceeds state standards*); **Proficient** (*meets state standards*); **Basic**; **Below Basic**; and **Far Below Basic**. Students scoring at the Proficient or Advanced level meet state standards in that content area. The tables below show the percentage of students that scored at Proficient or Advanced levels in English-language arts, mathematics, and science.

Percentage of Students Scoring At Proficient or Advanced Levels									
	Kenwood ES			Kenwood ESD			California		
	07-08	08-09	09-10	07-08	08-09	09-10	07-08	08-09	09-10
English-Language Arts	68%	69%	66%	68%	69%	66%	46%	50%	52%
Mathematics	70%	79%	79%	70%	79%	79%	43%	46%	48%
Science	64%	75%	76%	64%	75%	76%	46%	50%	54%

STAR Results by Student Group: English-Language Arts, Mathematics, and Science

Percentage of Students Scoring At Proficient or Advanced Levels			
Group	Spring 2010 Results		
	English-Language Arts	Mathematics	Science
All Students in the District	66%	79%	76%
All Students at the School	66%	79%	76%
Male	67%	81%	69%
Female	66%	77%	83%
Black or African American	❖	❖	❖
American Indian or Alaska Native	❖	❖	❖
Asian	❖	❖	❖
Filipino	❖	❖	❖
Hispanic or Latino	❖	❖	❖
Native Hawaiian or Pacific Islander	❖	❖	❖
White	67%	80%	78%
Two or More Races	❖	❖	❖
Socioeconomically Disadvantaged	62%	69%	❖
English Learners	❖	❖	❖
Students with Disabilities	38%	50%	❖
Students Receiving Migrant Education Services	❖	❖	❖

❖ Scores are not shown when the number of students tested is 10 or less, either because the number of students tested in this category is too small for statistical accuracy or to protect student privacy.

Standardized Testing and Reporting Program

The Standardized Testing and Reporting (STAR) Program consists of several key tests, including the California Standards Test (CST), California Modified Assessment (CMA), and California Alternate Performance Assessment (CAPA). The CSTs are multiple choice tests in English-language arts, mathematics, science, and history-social science for varying grade levels. Some grade levels also participate in an essay writing test.

The CSTs are used to determine students' achievement of the California Academic Content Standards. These standards describe the knowledge and skills that students are expected to learn at each grade level and subject.

The CMA is a modified assessment for students with disabilities who have an individualized education program (IEP). It is designed to assess those students whose disabilities prevent them from achieving grade-level proficiency on an assessment of the content standards with or without accommodations.

The CAPA is an alternate assessment for students with significant cognitive disabilities who are unable to take the CST with accommodations or modifications or the CMA with accommodations.

For a complete report on all tests, participation, groups, and their scores by grade level, please visit <http://star.cde.ca.gov/>. To learn more about the STAR Program, please visit the guide at www.cde.ca.gov/ta/tg/sr/documents/starpkt5inrpts.pdf.



Academic Performance Index

The Academic Performance Index (API) is an annual measure of the academic performance and progress of schools in California. The API is a score on a scale of 200 to 1,000 that reflects a school's, district's or a student group's performance level, based on the results of statewide testing. An API score of 800 is set as the statewide target.

Each annual API reporting cycle includes a Base and a Growth API. The Base API starts the reporting cycle and is released approximately a year after testing (i.e., The 2009 Base is calculated from results of statewide testing in spring 2009 but is released in May 2010). The Growth API is released after the Base API but is calculated from test results from the following year (i.e., The Growth API is calculated from results of statewide testing in spring 2010 and released in August 2010). Therefore, for the 2009-10 API reporting cycle, the 2009 Base indicator and 2010 Growth indicator are used. To learn more about API, please visit the API information guide at www.cde.ca.gov/ta/ac/ap/documents/infoguide09.pdf and the API overview guide at www.cde.ca.gov/ta/ac/ay/documents/overview10.pdf.

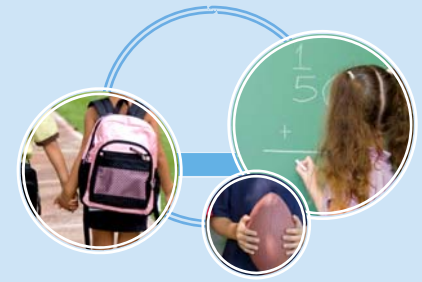
API Ranks

API Ranks — Three Year Comparison			
	2007	2008	2009
Statewide API Rank	8	9	8
Similar Schools API Rank	1	2	1

API Growth by Student Group

API Growth by Student Group — Three Year Comparison			
Group	Actual API Change		
	07-08	08-09	09-10
All Students at the School	35	-8	8
Black or African American	■	■	■
American Indian or Alaska Native	■	■	■
Asian	■	■	■
Filipino	■	■	■
Hispanic or Latino	■	■	■
Native Hawaiian or Pacific Islander	■	■	■
White	42	-13	5
Two or More Races	■	■	■
Socioeconomically Disadvantaged	■	■	■
English Learners	■	■	■
Students with Disabilities	■	■	■

■ Data are reported only for numerically significant groups.



API Ranks

Schools are ranked in ten categories of equal size, called deciles, from 1 (lowest) to 10 (highest) based on their API Base reports. A school's "statewide rank" compares its API to the APIs of all other schools statewide of the same type (elementary, middle, or high school). A "similar schools rank" reflects how a school compares to 100 statistically matched similar schools. This table shows the school's three-year data for statewide API rank and similar schools API rank, for which information is available.

API Growth by Student Group

This table displays, by student group, the actual API change in points added or lost for the past three years.



API Growth by Student Group: 2010 Growth API Comparison

API Growth by Student Group — 2010 Comparison			
Group	2010 Growth API		
	Kenwood ES	Kenwood ESD	California
All Students	871	871	767
Black or African American	■	■	686
American Indian or Alaska Native	■	■	728
Asian	■	■	890
Filipino	■	■	851
Hispanic or Latino	■	■	715
Native Hawaiian or Pacific Islander	■	■	753
White	877	877	838
Two or More Races	■	■	807
Socioeconomically Disadvantaged	■	■	712
English Learners	■	■	692
Students with Disabilities	■	■	580

■ Data are reported only for numerically significant groups.

API Testing Note: Assessment data are reported only for numerically significant groups. To be considered 'numerically significant' for the API, the group must have either: (1) at least 50 students with valid test scores who make up at least 15% of the total valid scores, or (2) at least 100 students with valid test scores.

Federal Intervention Program

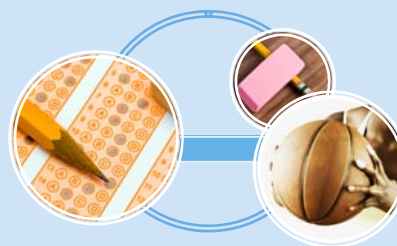
Schools and districts that receive Title I funding can enter Program Improvement (PI) if they fail to meet AYP over two consecutive years in the same content area (English-language arts or mathematics) or on the same indicator (API or graduation rate). With each additional year they don't meet AYP, they advance to the next level of intervention. This table displays the 2010-11 Program Improvement status for the school and district. For more information, please visit www.cde.ca.gov/ta/ac/ay/.

Federal Intervention Program		
	Kenwood ES	Kenwood ESD
Program Improvement Status	◇	◇
First Year of Program Improvement	◇	◇
Year in Program Improvement	◇	◇
Number of Schools Identified for Program Improvement		◇
Percent of Schools Identified for Program Improvement		◇

◇ Information not available.

API Growth by Student Group: 2010 Growth API Comparison

This table displays, by student group, the 2010 Growth API at the school, district, and state level.



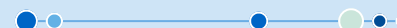
California Physical Fitness Test

Each spring, all students in grades 5, 7, and 9 are required to participate in the California Physical Fitness Test (PFT). The State Board of Education designated the *Fitnessgram*® as the PFT for students in California public schools. The test measures six key fitness areas:

1. Aerobic Capacity
2. Body Composition
3. Flexibility
4. Abdominal Strength and Endurance
5. Upper Body Strength and Endurance
6. Trunk Extensor Strength and Flexibility

The primary goal of the *Fitnessgram*® is to assist students in establishing lifetime habits of regular physical activity. The table shows the percentage of students meeting the fitness standards for the most recent testing period. For more detailed information on the California PFT, please visit www.cde.ca.gov/ta/tg/pf/.

Percentage of Students Meeting Fitness Standards	
Grade 5	
Four of Six Standards	8.0%
Five of Six Standards	16.0%
Six of Six Standards	72.0%



Adequate Yearly Progress

Adequate Yearly Progress Criteria				
	Kenwood ES		Kenwood ESD	
Met Overall AYP	Yes		Yes	
AYP Criteria	English-Language Arts	Mathematics	English-Language Arts	Mathematics
Participation Rate	Yes	Yes	Yes	Yes
Percent Proficient	Yes	Yes	Yes	Yes
API	Yes		Yes	
Graduation Rate	✧		✧	

✧ Not applicable. The graduation rate for AYP criteria applies to high schools.

Public Internet Access

Internet access is available at public libraries and other locations that are publicly accessible (i.e., the California State Library). Access to the Internet at libraries and public locations is generally provided on a first-come, first-served basis. Other use restrictions include the hours of operation, the length of time that a workstation may be used (depending on availability), the types of software programs available at a workstation, and the ability to print documents.

Academic Counselors and School Support Staff

Academic Counselors and School Support Staff	
Academic Counselors	FTE and Ratio
Number of Academic Counselors (FTE)	0.00
Ratio of Students Per Academic Counselor	✧
Support Staff	FTE
Counselor (Social Behavioral or Career Development)	0.20
Library Media Teacher (Librarian)	0.47
Library Media Services Staff (Paraprofessional)	0.00
Psychologist	0.07
Social Worker	0.00
Nurse	0.07
Speech/Language/Hearing Specialist	0.01
Resource Specialist (non-teaching)	0.00
Other	2.05

✧ Not applicable.

Adequate Yearly Progress

The No Child Left Behind (NCLB) Act requires that all schools and districts meet Adequate Yearly Progress (AYP) requirements. To meet these standards, California public schools and districts must meet or exceed criteria in four target areas:

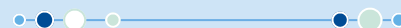
1. Participation rate on statewide assessments in English-language arts and mathematics
2. Percentage of students scoring proficient on statewide assessments in English-language arts and mathematics
3. API scores
4. Graduation rate for high schools

The table displays whether or not the school and district made AYP overall and met each of the AYP criteria for 2009-10. For more information, visit www.cde.ca.gov/ta/ac/ay/.



Academic Counselors and School Support Staff

This table displays information about academic counselors and support staff at the school and their full-time equivalent (FTE).



Teacher Qualifications

Teacher Credential Information				
	Kenwood ESD	Kenwood ES		
Teachers	09-10	07-08	08-09	09-10
With Full Credential	15	12	12	15
Without Full Credential	0	0	0	0
Teaching Outside Subject Area of Competence		0	0	0

Teacher Misassignments and Vacant Teacher Positions

This table displays the number of teacher misassignments (teachers assigned without proper legal authorization) and the number of vacant teacher positions (not filled by a single designated teacher assigned to teach the entire course at the beginning of the school year or semester). Please note: Total teacher misassignments includes the number of misassignments of teachers of English Learners.

Teacher Misassignments and Vacant Teacher Positions			
	Kenwood ES		
	08-09	09-10	10-11
Teacher Misassignments of English Learners	0	0	0
Total Teacher Misassignments	0	0	0
Vacant Teacher Positions	0	0	0

No Child Left Behind Compliant Teachers

NCLB requires that all teachers of core academic subject areas be "highly qualified." In general, for a teacher to be considered highly qualified, they must have a bachelor's degree, an appropriate California teaching credential, and have demonstrated competence for each core subject he or she teaches. The table displays data regarding NCLB compliant teachers from the 2009-10 school year. For more information on teacher qualifications related to NCLB, please visit www.cde.ca.gov/nclb/sr/tq.

No Child Left Behind Compliant Teachers		
	Percent of Classes in Core Academic Subjects	
	Taught by NCLB Compliant Teachers	Taught by Non-NCLB Compliant Teachers
Kenwood ES	100%	0%
All Schools in District	100%	0%
High-Poverty Schools in District	✧	✧
Low-Poverty Schools in District	100%	0%

NCLB Note: High-poverty schools are defined as those schools with student participation of approximately 75% or more in the free and reduced priced meals program. Low-poverty schools are those with student participation of approximately 25% or less in the free and reduced priced meals program.

✧ Not applicable.

Teacher Qualifications

This table shows information about teacher credentials and teacher qualifications. More information can be found by visiting <http://data1.cde.ca.gov/dataquest/>.



Professional Development

Staff development sessions focus on best practices and research based instructional design. Teachers participate in cross grade level collaboration, County and State in-service offerings, and targeted academic curriculum areas. Teacher/Principal meetings, peer coaching, and data collection and assessments are used to support implementation.

For 2007-08 and 2008-09, one day was dedicated to staff and professional development each year. For 2009-10, three days were dedicated to staff and professional development.

School Safety

The Kenwood Elementary Safety Committee meets monthly as coordinated by the School Site Council. Monthly fire drills and other as needed emergency drills are scheduled throughout the school year. Other emergency procedures and inservice training for staff members are provided by the Redwood Empire Schools Insurance Group.

The Kenwood Elementary School utilizes the Emergency Operations Plan for Schools as created by the Redwood Empire Schools Insurance Group. It is reviewed annually by the entire staff and updated as needed. It was most recently reviewed, updated, and discussed with school faculty on November 2009.

District Financial Data

This table displays district teacher and administrative salary information and compares the figures to the state averages for districts of the same type and size based on the salary schedule. Note the district salary data does not include benefits.

District Salary Data		
Category	Kenwood ESD	Similar Sized District
Beginning Teacher Salary	\$40,157	\$38,905
Mid-Range Teacher Salary	\$57,119	\$56,504
Highest Teacher Salary	\$77,339	\$71,750
Average Principal Salary	✱	\$92,053
Superintendent Salary	✱	\$111,055
Teacher Salaries — Percent of Budget	36.8%	37.9%
Administrative Salaries — Percent of Budget	9%	6.8%

✱ Single-site districts are not required to display this data. (*Education Code Section 41409.3*).

School Financial Data

The following table displays the school's average teacher salary and a breakdown of the school's expenditures per pupil from unrestricted and restricted sources.

School Financial Data	
	Kenwood ES
Total Expenditures Per Pupil	\$12,406
Expenditures Per Pupil From Restricted Sources	\$4,088
Expenditures Per Pupil From Unrestricted Sources	\$8,318
Annual Average Teacher Salary	\$63,799

Financial Data Comparison

The following table displays the school's per pupil expenditures from unrestricted sources and the school's average teacher salary and compares it to the district and state data.

Financial Data Comparison		
	Expenditures Per Pupil From Unrestricted Sources	Annual Average Teacher Salary
Kenwood ES	\$8,318	\$63,799
Kenwood ESD	\$8,318	\$63,799
California	\$5,681	\$57,352
School and District — Percent Difference	◆	◆
School and California — Percent Difference	+31.7%	+10.1%

◆ Because Kenwood Elementary School is a single-site district, the percent difference does not apply.

Financial Data

The financial data displayed in the SARC is from the 2008-09 fiscal year. The most current fiscal information available provided by the state is always two years behind the current school year, and one year behind most other data included in this report. For more detailed financial information, please visit www.cde.ca.gov/ds/fd/cs and www.cde.ca.gov/ds/fd/ec.



Types of Services Funded

Kenwood School employs additional support staff in the following areas: psychologist, counselor, speech and language therapist, instructional aides, nurse, physical education teacher, librarian, music teacher, art teacher, computer lab, Title I coordinator, and reading specialist.

Kenwood School also serves students in the Gifted and Talented Program and participates in the Class Size Reduction Program for grades K-3.

School Accountability Report Card

Data in this report are provided by the California Department of Education (CDE), school and the district office. For additional information on facts about California schools and districts, please visit DataQuest at <http://data1.cde.ca.gov/dataquest>. DataQuest is an online resource that provides reports for accountability, test data, enrollment, graduates, dropouts, course enrollments, staffing and data regarding English Learners.

All data accurate as of February 2011.

PUBLISHED BY:

SIA School
Innovations
& Advocacy

www.sia-us.com | 800.487.9234