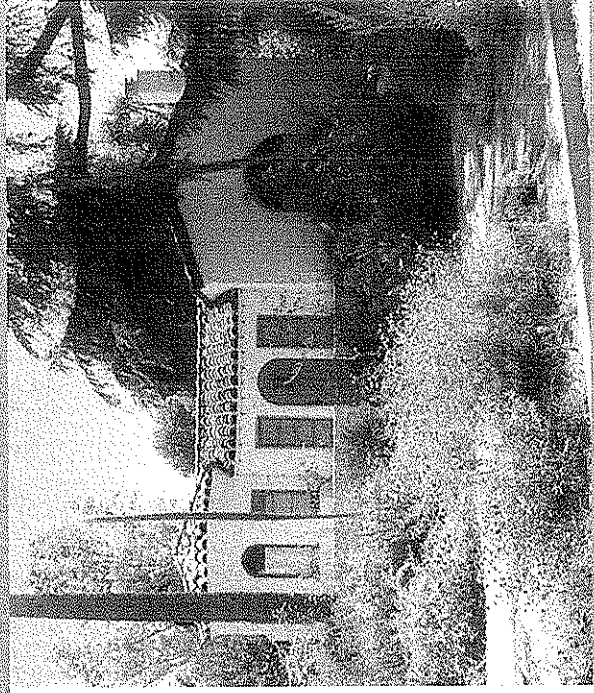


The Origins
of this
brochure...

More Resources:
CALIFORNIA NATIVE
PLANT SOCIETY

Handy Plant
RE-SPECIFIER

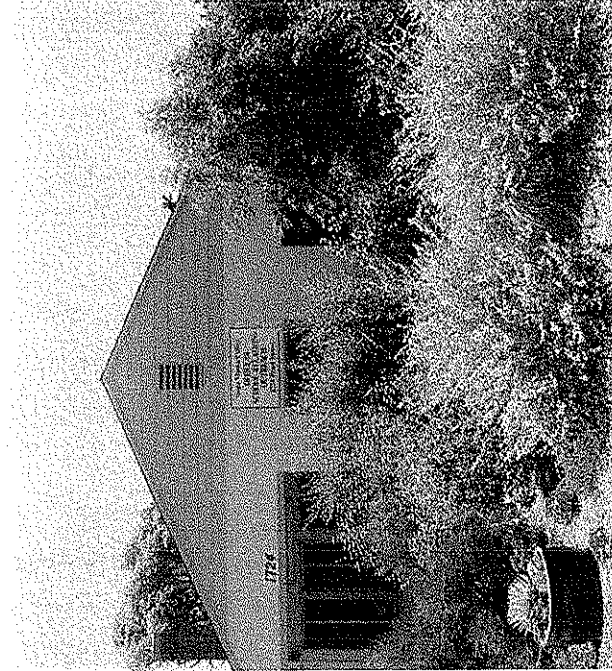


THE HANDY PLANT "RE-SPECIFIER"
listing California natives that should replace
common exotic ornamental landscape
choices, was first written for Tree of Life
Nursery in 1976 by native plant expert Art
Tyree. This brochure expands and updates
the still-valid original.

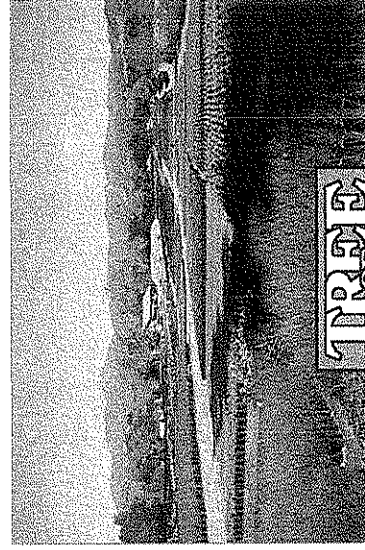
These suggestions are only a small sample
of the possibilities available for your project.

Please call Tree of Life Nursery at (949) 728-0685
for answers to your questions and re-specifying needs.

Copyright Tree of Life Nursery, 2006



California Native Plant Society is a statewide,
nonprofit organization dedicated to increasing
the understanding and appreciation of
California's native plants, and to preserving
them and their natural habitats for future
generations. Please visit the website at
www.cnps.org for more information, and to
request a *Gardening with Native Plants* brochure.



TREE
LIFE
NURSERY

We Grow.

www.CaliforniaNativePlants.com

TREE
LIFE
NURSERY

We Grow.

www.CaliforniaNativePlants.com

Suggestions for replacing
exotic ornamental plants with
California natives.

Thinking of TREES?

THINKING OF THINKING OF THINKING OF

CUPANIOPSIS (Curtainwood)
EUCALYPTUS
FIGUS (Fig)
MAGNOLIA
MELALEUCA
PINUS
PRUNUS, PYRUS (flowering Pear)
SCHINUS (Pepper)

For a clean, small but stately shade tree look at **UMBELLULARIA CALIFORNICA, AESCULUS CALIFORNICA**.
 Deliver us from Australia with California's own texture and character trees: **LYONOTHAMNUS, PINUS TORREYANA, PLATANUS RACEMOSA**.
 Too dense, tropical, shady, and too many surface roots. Consider **QUERCUS, PLATANUS, UMBELLULARIA**, and **PRUNUS** as superior natives.
 Leave this southern belle in the South. Out west we prefer **QUERCUS, PRUNUS, CERCIS, UMBELLULARIA**.
 No need to import this Aussie. Stick with **QUERCUS ENGELMANNII, ARCTOSTAPHYLOS MANZANITA**, or **LYONOTHAMNUS**.
 Instead of the habitual choices, consider **PINUS TORREYANA** or **COULTERI** as large pines.
CERCIS OCCIDENTALIS is stronger; flowers longer; **PRUNUS LYONII** makes a fine small canopy tree.
 Traditional, historical *S. mollis* doesn't compare to **QUERCUS AGRIFOLIA**.

ACACIA LATIFOLIA
CARISSA (Natal Plum)
LIGUSTRUM (Privet)
MERIAM (Oleander)
PITTIOSPORUM
PYRACANTHA
RHAPHIOLEPIS (Indian Hawthorne)
XYLOSMA

Such plants are unnecessary with the tough and handsome **RHUS INTEGRIFOLIA, MYRICA CALIFORNICA** and **MAHONIA 'GOLDEN ABUNDANCE'** available.
 Oh no, not again. Be sure that sturdy natives such as **ARCTOSTAPHYLOS JOHN DOURLEY** or **'SUNSET'; CEANOTHUS 'CONCHA'; RHAMNUS 'LITTLE SUR';** will never look stereotyped and will always do the job.
 Quick-fee to **RHUS INTEGRIFOLIA** or **PRUNUS ILICIFOLIA**.
 California's color shrubs shine: **CEANOTHUS, COMAROSTAPHYLIS DIVERSIFOLIA, DENDROMECON HARTFORDII**
RHAMNUS CALIFORNICA is lush, dense, unfussy.
 Lush foliage, scarlet berries, minus *Pyracantha's* thorns, diseases, pests: **HETEROMELES ARBUTIFOLIA**.
 Is this what you really want, or only a habit? Break out with **ARCTOSTAPHYLOS HOWARD McMINN**.
 Clean, reliable green: **RHAMNUS CALIFORNICA, MYRICA CALIFORNICA, HETEROMELES ARBUTIFOLIA**

THINKING OF THINKING OF THINKING OF

Thinking of SHRUBS?

ANIGOSANTHUS (Kangaroo Paw)
ECHVEVERIA, SEDUM (Hearts & Chicks)
ECHIUM (Pride of Madeira)
GAZANIA
HEDERA (Ivy)
HEMEROCALLIS (Daylily)
"ICE PLANT"
JUNIPER
LAVANDULA (Lavender)
MYOPORUM
PENNISETUM (Fountain Grass)
PHORMIUM (New Zealand Flax)
TRACHELOSPERMUM (Star-Jasmine)

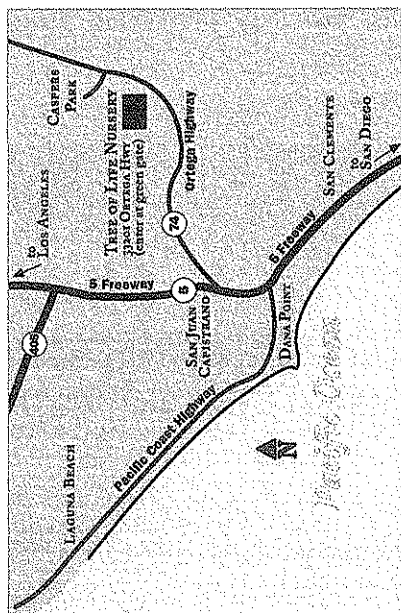
The name should give this away. Leave it down under or save it for cut flower use. In the California garden, you and the hummingbirds will like **EPILOBIUM, LOBELIA LAXIFLORA, GALVEZIA, LEYMUS, IRIS, PENSTEMON** and **SALVIA**.
DUDLEYA can provide that stunning succulent architecture.
 Compatible, gray, showy, but not the Pride of California. You'll never go wrong with **CEANOTHUS, RHAMNUS, DENDROMECON, FREMONTODENDRON**.
 Try some authentic color from **MIMULUS, HEUCHERA, PENSTEMON, ENCELIA, EPILOBIUM, ERIGERON**.
 Spare us the Ivy menace with lush carpets of **ARCTOSTAPHYLOS 'EMERALD CARPET', BACCHARIS 'PIGEON POINT'**, or **ARCTOSTAPHYLOS 'POINT REYES'**.
 Only in flower shows, please! In the California garden we need **IRIS DOUGLASSIANA, LEYMUS, JUNCUS**, native grasses and reeds combined with **MIMULUS**.
 Oh yeah, that's original! Why not a combination of low growing plants like **BACCHARIS, IVA, ERIOGONUM, SALVIA, CEANOTHUS, MIMULUS**, (so many more!) to create habitat AND provide erosion control.
 Out of the juniper rut with the low-growing forms of **ARCTOSTAPHYLOS, CEANOTHUS 'YANKEE POINT'**.
 Save it for your trip to France. Use **SALVIA, MIMULUS, ERIOGONUM, TRICHOSTEMA, PENSTEMON** instead.
 For your slopes, **CEANOTHUS 'YANKEE POINT'** or **ARCTOSTAPHYLOS 'PACIFIC MIST'** will set your project apart from the masses.
 Don't plant an invasive weed! Native grasses **MUHLENBERGIA, NASSELLA, ARISTIDA**, and many others will always work better.
 Striking, a little gaudy, flax probably looks great in New Zealand. Want impact? **ROMNEYA 'WHITE CLOUD', YUCCA, FREMONTODENDRON**.
 Non-intrusive, great under trees is the aromatic **RIBES VIBURNIFOLIUM**, shiny and neat like Star Jasmine on less than one fourth the water.

THINKING OF THINKING OF THINKING OF

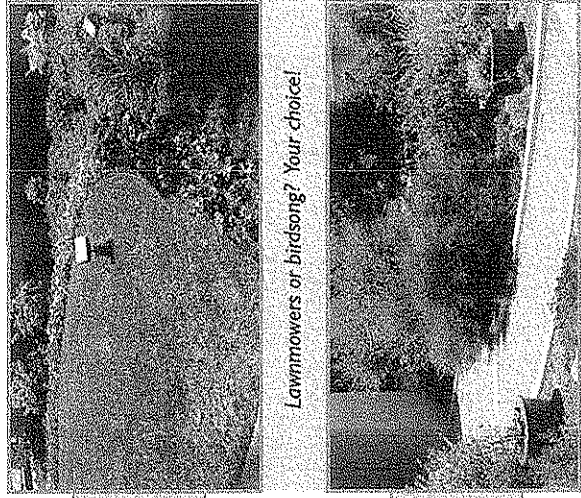
Thinking of PERENNIALS or GROUND COVERS?

ANIGOSANTHUS (Kangaroo Paw)
ECHVEVERIA, SEDUM (Hearts & Chicks)
ECHIUM (Pride of Madeira)
GAZANIA
HEDERA (Ivy)
HEMEROCALLIS (Daylily)
"ICE PLANT"
JUNIPER
LAVANDULA (Lavender)
MYOPORUM
PENNISETUM (Fountain Grass)
PHORMIUM (New Zealand Flax)
TRACHELOSPERMUM (Star-Jasmine)

The name should give this away. Leave it down under or save it for cut flower use. In the California garden, you and the hummingbirds will like **EPILOBIUM, LOBELIA LAXIFLORA, GALVEZIA, LEYMUS, IRIS, PENSTEMON** and **SALVIA**.
DUDLEYA can provide that stunning succulent architecture.
 Compatible, gray, showy, but not the Pride of California. You'll never go wrong with **CEANOTHUS, RHAMNUS, DENDROMECON, FREMONTODENDRON**.
 Try some authentic color from **MIMULUS, HEUCHERA, PENSTEMON, ENCELIA, EPILOBIUM, ERIGERON**.
 Spare us the Ivy menace with lush carpets of **ARCTOSTAPHYLOS 'EMERALD CARPET', BACCHARIS 'PIGEON POINT'**, or **ARCTOSTAPHYLOS 'POINT REYES'**.
 Only in flower shows, please! In the California garden we need **IRIS DOUGLASSIANA, LEYMUS, JUNCUS**, native grasses and reeds combined with **MIMULUS**.
 Oh yeah, that's original! Why not a combination of low growing plants like **BACCHARIS, IVA, ERIOGONUM, SALVIA, CEANOTHUS, MIMULUS**, (so many more!) to create habitat AND provide erosion control.
 Out of the juniper rut with the low-growing forms of **ARCTOSTAPHYLOS, CEANOTHUS 'YANKEE POINT'**.
 Save it for your trip to France. Use **SALVIA, MIMULUS, ERIOGONUM, TRICHOSTEMA, PENSTEMON** instead.
 For your slopes, **CEANOTHUS 'YANKEE POINT'** or **ARCTOSTAPHYLOS 'PACIFIC MIST'** will set your project apart from the masses.
 Don't plant an invasive weed! Native grasses **MUHLENBERGIA, NASSELLA, ARISTIDA**, and many others will always work better.
 Striking, a little gaudy, flax probably looks great in New Zealand. Want impact? **ROMNEYA 'WHITE CLOUD', YUCCA, FREMONTODENDRON**.
 Non-intrusive, great under trees is the aromatic **RIBES VIBURNIFOLIUM**, shiny and neat like Star Jasmine on less than one fourth the water.



TREE OF LIFE NURSERY is the largest grower of California native plants in the state. Specializing in a line of plants from the Southern California region, Tree of Life is dedicated to providing the finest quality of commercially available plants to the landscaping trade and to the public. Tree of Life Nursery believes in creating spaces that look and feel authentically 'Californian'.



Lawnmowers or birdsong? Your choice!

FOR MORE INFORMATION PLEASE VISIT:
www.CaliforniaNativePlants.com